

Retaining and fence system STAVOBLOCK

Catalog sheet

Number of sheet : 07

Producer	STAVOBLOCK system, s.r.o. Lezník u Poličky, Czech Republic
Norm	PN 12001, ČSN ISO 9001, CCMS 12833-R, esr 1235, bba 01/4148 esr 4797
Material	Vibrated concrete classes of C 16/20 - cement, crushed aggregate, water, pigment and additives
Using	For retaining walls, partition walls and fences. Terraced slope stabilization, regulation of watercourses and areas, modifications parking lots, parks, construction fences, noise barrier
Description	Stavoblock system consists of blocks that are composed without using mortar and adhesives for advance prepared gravel base. Displacement fittings are "locked" by dovetail locks. Visual elements can be combined to create a wall coated with split, smooth or combination.

Technical and building size garden system Stavoblock

Material: colour concrete	Compressive Strength according to ČSN EN 15435:
Density: 2100 kg/m ³	43,0 MPa (PP – facing elements) 8,14 MPa (KP – anchoring elements)
Visual modification: split, smooth	Frost Resistance according to ČSN 73 1322: 0,91 (PP), 0,86 (KP)
Montage: nomortar technology	25 freeze-thaw cycles
Laying: manually	Water Absorption according to ČSN EN 772-11: 3,528 [g/(m ² ·s)] (PP)
	saturation time: 600 seconds 5,9 [g/(m ² ·s)] (KP)

Colours:

White, sand, light gray, colorado, anthracite

Unites of system:

Stavoblock Jumbo, Flat, Standard, Pony, Angled Element, Angled Coupler, Continuous Covering Panel, Covering Panel, Pillar Covering Plate, Double Join Rod 200, Double Join Rod 100, T-Coupler, Corner-Coupler, Long Coupler, Short Coupler



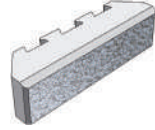
Retaining and fence system Stavoblock - accessories

Stavoblock Jumbo ● ● ●



Size: 400x200x100 mm (lxhxt)
Dimensional tolerance: ± 2,0 mm
Visual side: split, smooth
Weight: 15 kg
Consumption on 1m²: 12,5 pcs
Quantity on pallet: 96 pcs
Weight pallet with wrapper: 1450 kg

Stavoblock Flat ● ● ●



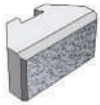
Size: 400x100x100 mm (lxhxt)
Dimensional tolerance: ± 2,0 mm
Visual side: split, smooth
Weight: 7 kg
Consumption on 1m²: 25 pcs
Quantity on pallet: 192 pcs
Weight pallet with wrapper: 1385 kg

Stavoblock Standard ● ● ●



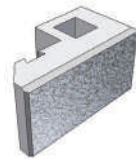
Size: 200x200x100 mm (lxhxt)
Dimensional tolerance: ± 2,0 mm
Visual side: split, smooth
Weight: 6,5 kg
Consumption on 1m²: 25 pcs
Quantity on pallet: 192 pcs
Weight pallet with wrapper: 1270 kg

Stavoblock Pony ● ● ●



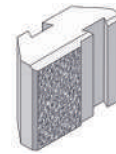
Size: 200x100x100 mm (lxhxt)
Dimensional tolerance: ± 2,0 mm
Visual side: split, smooth
Weight: 3,4 kg
Consumption on 1m²: 50 pcs
Quantity on pallet: 384 pcs
Weight pallet with wrapper: 1325 kg

Angled Element ● ●



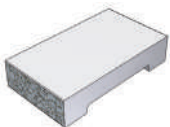
Size: 400x200x100 mm (lxhxt)
Dimensional tolerance: ± 2,0 mm
Visual side: split, smooth
Weight: 20 kg
Consumption on 1m²: 5 pcs
Quantity on pallet: 32 (left) + 32 (right)
Weight pallet with wrapper: 1300 kg

Angled Coupler ● ● ●



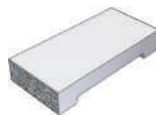
Size: 250x100x200 mm (lxhxt)
Dimensional tolerance: ± 2,0 mm
Visual side: split, smooth
Weight: 8,5 kg
Consumption on 1bm: 10 pcs
Quantity on pallet: 40 (left) + 40 (right)
Weight pallet with wrapper: 700 kg

Continuous Covering Panel ● ● ●



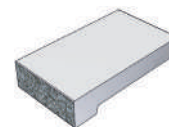
Size: 200x300x75 mm (lxhxt)
Dimensional tolerance: ± 2,0 mm
Visual side: split, smooth, ground
Weight: 10 kg - split, smooth
7 kg - split, ground
Consumption on 1 bm: 5 pcs
Quantity on pallet: 48 pcs
Weight pallet with wrapper: 356 kg

Continuous Covering Panel ● ● ●



Size: 200x470x75 mm (lxhxt)
Dimensional tolerance: ± 2,0 mm
Visual side: smooth
Weight: 16,4 kg
Consumption on 1 bm: 5 pcs
Quantity on pallet: 24 pcs
Weight pallet with wrapper: 404 kg

Covering Panel ● ● ●



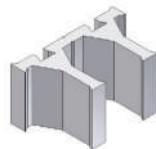
Size: 200x300x75 mm (lxhxt)
Dimensional tolerance: ± 2,0 mm
Visual side: split, ground
Weight: 9 kg
Consumption on 1 bm: 5 pcs
Quantity on pallet: 48 pcs
Weight pallet with wrapper: 356 kg

Pillar Covering Plate ● ● ●



Size: 500x500x70 mm (lxhxt)
Dimensional tolerance: ± 2,0 mm
Visual side: smooth
Weight: 25 kg
Consumption : 1 pcs
Quantity on pallet: 2 pcs
Weight pallet with wrapper: 70 kg

Double Join Rod ● ●



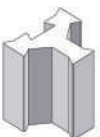
Size: 392x247x200 mm (lxhxt)
Dimensional tolerance: ± 2,0 mm
Visual side: smooth
Weight: 15,5 kg
Consumption on 1m²: 12,5 pcs
Quantity on pallet: 108 pcs
Weight pallet with wrapper: 1674 kg

T-Coupler ● ● ●



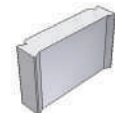
Size: 100x146x200 mm (lxhxt)
Dimensional tolerance: ± 2,0 mm
Visual side: smooth
Weight: 3,1 kg

T-Coupler ● ● ●



Size: 140x125x150 mm (lxhxt)
Dimensional tolerance: ± 2,0 mm
Visual side: smooth
Weight: 3 kg

Long Coupler ● ● ●



Size: 58x245x150 mm (lxhxt)
Dimensional tolerance: ± 2,0 mm
Visual side: smooth
Weight: 2,7 kg

Short coupler ● ● ●



Size.: 58x40x150
Tol.: ± 2,0 mm
Visu.: smooth
Weig.: 0,6 kg

Corner peg ● ● ●



Size.: 40x40x150
Tol.: ± 2,0 mm
Visu.: smooth
Weig.: 1,4 kg